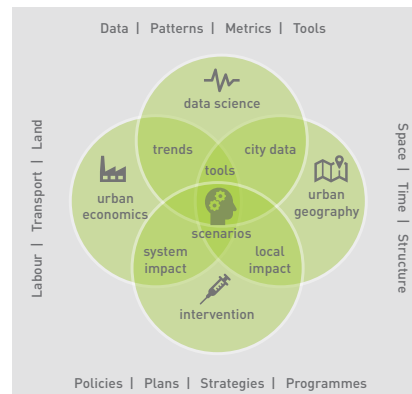




URBAN ECONOMIES

More than two-thirds of our urban economies are private transactional decisions between individuals, households and businesses. An evidence-based understanding of urban markets is central to the realisation of urban policy aspirations aimed at improving the productivity of cities and the welfare of citizens. The Urban Economies practice area occupies an important niche in the public sector consulting space by focusing explicitly on harnessing land, labour and transport markets in pursuit of policy objectives. Our mission is to equip decision-makers with the best available tools and evidence to design, prioritise and spatially target interventions aimed at particularly complex multi-scalar problems, such as the affordability of housing and access, the liveability of neighbourhoods, the management of the public environment, the retention and growth of businesses, and the sustainability of local government.

Our approach is to draw on the most appropriate analytical techniques from data science, economics and urban geography disciplines to evaluate the intended and unintended costs, benefits and trade-offs associated with an existing or proposed programme, intervention or site-level development. The urban economies practice area prides itself in its expertise in looking 'under the bonnet' of observed sectoral and system-wide trends by harnessing a wide array of administrative and 3rd party data and, by means of bespoke interaction models, create



the evidence-base for supporting decision-making in the public interest.

We provide analytical support in a range of fields requiring a longer-term perspective: spatial planning and land use management, infrastructure planning, urban management and property development. Types of projects include advanced spatial analysis and modelling, multi-scalar impact assessments, and the development of bespoke decision-making support tools.

Practice Area Leader:

Claus Rabe
+27 21 6711402 / claus@pdg.co.za

KEY PROJECTS:

Neighbourhood-level Land Use Performance Metrics, ITS Global for City of Cape Town, 2017-2019

Long-Term Area-based Demographic Projections, City of Cape Town, 2018

Multi-scalar Impact Evaluation of Klappmuts Industrial Hub, Infinity Consulting for Distell, 2018

Land-based Funding Options for Gautrain Extension, Pegasys for DBSA, 2019-2020

Economic Impact of Water Resilience Scenarios, PGWC, 2019